



Regulator: copper and PTFE-free

# R1000/R2000/R3000 R4000/R6000/R8000-W-P6 Series

Copper ion prevention treatment

● Port size: 1/8 to 1

JIS symbol



## How to order

**A** Model No. **R1000** - **B** Port size **6** - **C** Port thread **W** - **D** Option **T** **P6** - **E** Display unit **A6W** **F** Pipe adaptor set (included) **G** Bracket (included)

(White type) Copper and PTFE free specifications

\* Refer to page 30 for the explanation of the option.

A Model No.		R1000	R2000	R3000	R4000	R6000	R8000
B Port size							
6	1/8	●					
8	1/4	●	●	●	●		
10	3/8		●	●	●		
15	1/2				●		
20	3/4					●	●
25	1					●	●
C Port thread							
Blank	Rc thread	●	●	●	●	●	●
N	NPT thread	●	●	●	●	●	●
G	G thread	●	●	●	●	●	●
D Option							
Pressure range	Blank	0.05 to 0.85 MPa	●	●	●	●	●
	L	0.05 to 0.35 MPa	●	●	●	●	●
Pressure relief	Blank	With relief mechanism	●	●	●	●	●
	N	Non-relief	●	●	●	●	●
Pressure gauge	T	No pressure gauge (gauge port (1/4) is assembled sealed)	●	●	●	●	●
	T6	Pressure gauge ready (gauge port (Rc 1/8) is left open) *6	●	●	●	●	●
	T8	Pressure gauge ready (gauge port (1/4) is left open) *6	●	●	●	●	●
Flow direction	Blank	Standard flow (left → right)	●	●	●	●	●
	X1	Reverse flow (right → left)	●	●	●	●	●
E Display unit							
Blank	MPa display (Rc thread), psi display (NPT thread), bar display (G thread)	●	●	●	●	●	●
J1	MPa display (NPT, G thread)	●	●	●	●	●	●
F Pipe adaptor set (included)							
Blank	Not included	●	●	●	●	●	●
A6*W	1/8 pipe adaptor set	●					
A8*W	1/4 pipe adaptor set	●	●	●	●		
A10*W	3/8 pipe adaptor set	●	●	●	●		
A15*W	1/2 pipe adaptor set		●	●	●		
A20*W	3/4 pipe adaptor set				●	●	●
A25*W	1 pipe adaptor set						●
A32*W	1 1/4 pipe adaptor set						●
* Adaptor thread							
Blank	Rc thread	●	●	●	●	●	●
N	NPT thread	●	●	●	●	●	●
G	G thread	●	●	●	●	●	●
G Bracket (included)							
Blank	Not included	●	●	●	●	●	●
BW	C type bracket	●	●	●	●	●	●
B3W	L type bracket	●	●	●	●	●	
B4W	B type bracket		●				

## ⚠ Precautions for model No. selection

- \*1: Refer to pages 136 to 142 for specifications, dimensions and flow characteristics.
- \*2: G threads and NPT threads are available for IN, OUT, and gauge ports.
- \*3: Select any one of the options.
- \*4: The pipe adaptor set and C type bracket cannot be used together.
- \*5: The joiner set is enclosed with the pipe adaptor set.
- \*6: The pressure gauge must be prepared separately.  
T6: G49D-6-P10-P6(L: G49D-6-P04-P6)  
T8: G59D-8-P10-P6(L: G59D-8-P04-P6)

F.R.L.  
F.R.  
F (Filtr)  
R (Reg)  
L (Lub)  
Drain Separ  
Mech Press SW  
Res press exh valve  
SlowStart  
Anti-bac/Bac-  
remove Filtr  
Film Resist FR  
Oil-ProhR  
Med Press FR  
No Cu/ PTFE FRL  
Outdrs FRL  
Adapter Joiner  
Press Gauge  
CompFRL  
LgFRL  
PrecsR  
VacF/R  
Clean FR  
ElecPneuR  
AirBoost  
Speed Ctrl  
Silncr  
CheckV/ other  
Fit/Tube  
Nozzle  
Air Unit  
PrecsCompn  
Electro Press SW  
ContactSW  
AirSens  
PresSW Cool  
Air Flo Sens/Ctrl  
WaterRISens  
TotAirSys (Total Air)  
TotAirSys (Gamma)  
Gas generator  
RefrDry  
DesicDry  
HiPolymDry  
MainFiltr  
Dischrg etc  
Ending



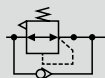
Reverse regulator: copper and PTFE-free

# R1100/R2100/R3100 R4100/R6100/R8100-W-P6 Series

Copper ion prevention treatment

● Port size: 1/8 to 1

JIS symbol



## How to order

**R1100** - **6** - **W** - **T** **P6** - **A6**

**A** Model No. (White type) Copper and PTFE free specifications **G** Bracket (included)

**F** Pipe adaptor set (included)

\* Refer to page 30 for the explanation of the option.

### A Model No.

R1100	R2100	R3100	R4100	R6100	R8100
●	●	●	●	●	●
●	●	●	●	●	●
●	●	●	●	●	●
●	●	●	●	●	●
●	●	●	●	●	●
●	●	●	●	●	●

Code	Description	R1100	R2100	R3100	R4100	R6100	R8100
<b>B Port size</b>							
6	1/8	●	●	●	●	●	●
8	1/4	●	●	●	●	●	●
10	3/8	●	●	●	●	●	●
15	1/2	●	●	●	●	●	●
20	3/4	●	●	●	●	●	●
25	1	●	●	●	●	●	●

<b>C Port thread</b>		<b>*2</b>					
Blank	Rc thread	●	●	●	●	●	●
N	NPT thread	●	●	●	●	●	●
G	G thread	●	●	●	●	●	●

<b>D Option</b>		<b>*3, *4</b>					
Pressure range	Blank	0.05 to 0.85 MPa	●	●	●	●	●
	L	0.05 to 0.35 MPa	●	●	●	●	●
Pressure relief	Blank	With relief mechanism	●	●	●	●	●
	N	Non-relief	●	●	●	●	●
Pressure gauge	T	No pressure gauge (gauge port (1/4) is assembled sealed)	●	●	●	●	●
	T6	Pressure gauge ready (gauge port (Rc 1/8) is left open) *7	●	●	●	●	●
	T8	Pressure gauge ready (gauge port (1/4) is left open) *7	●	●	●	●	●
Flow direction	Blank	Standard flow (left → right)	●	●	●	●	●
	X1	Reverse flow (right → left)	●	●	●	●	●

<b>E Display unit</b>		<b>*5, *6</b>					
Blank	MPa display (Rc thread), psi display (NPT thread), bar display (G thread)	●	●	●	●	●	●
J1	MPa display (NPT, G thread)	●	●	●	●	●	●

<b>F Pipe adaptor set (included)</b>		<b>Page 350 *5, *6</b>					
Blank	Not included	●	●	●	●	●	●
A6*W	1/8 pipe adaptor set	●	●	●	●	●	●
A8*W	1/4 pipe adaptor set	●	●	●	●	●	●
A10*W	3/8 pipe adaptor set	●	●	●	●	●	●
A15*W	1/2 pipe adaptor set	●	●	●	●	●	●
A20*W	3/4 pipe adaptor set	●	●	●	●	●	●
A25*W	1 pipe adaptor set	●	●	●	●	●	●
A32*W	1 1/4 pipe adaptor set	●	●	●	●	●	●

<b>* Adaptor thread</b>		<b>Page 350 *5, *6</b>					
Blank	Rc thread	●	●	●	●	●	●
N	NPT thread	●	●	●	●	●	●
G	G thread	●	●	●	●	●	●

<b>G Bracket (included)</b>		<b>Page 346</b>					
Blank	Not included	●	●	●	●	●	●
BW	C type bracket	●	●	●	●	●	●
B3W	L type bracket	●	●	●	●	●	●
B4W	B type bracket	●	●	●	●	●	●

## ⚠ Precautions for model No. selection

- \*1: Refer to pages 144 to 150 for specifications, dimensions and flow characteristics.
- \*2: G and NPT threads are available for IN, OUT, and gauge ports.
- \*3: Select any one of the options.
- \*4: Positions of check valve and pressure gauge cannot be changed. If the IN and OUT directions must be reversed, indicate "X1" at the end of the option field.
- \*5: The pipe adaptor set and C type bracket cannot be used together.
- \*6: The joiner set is enclosed with the pipe adaptor set.
- \*7: The pressure gauge must be prepared separately.  
T6: G49D-6-P10-P6(L: G49D-6-P04-P6)  
T8: G59D-8-P10-P6(L: G59D-8-P04-P6)